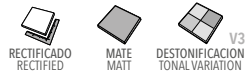


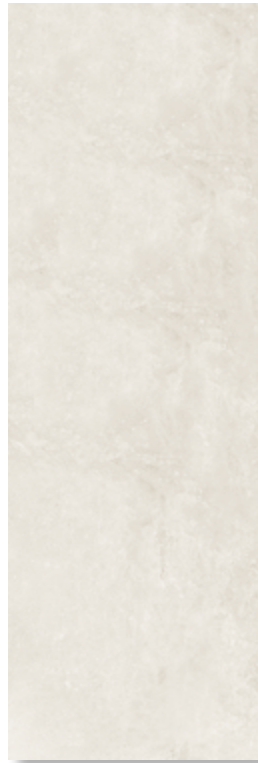
RHIN SUEDE

Monoporosa Rectificado
Rectified Wall Tiles



PERFIL

1.5x100 cm (x15.0 mm) 5/8"x39 1/2"
PERFIL RHIN TAUPE
V3960324 - 100138290 - G97
PERFIL RHIN IVORY
V3960318 - 100121471 - G97
PERFIL RHIN NATURAL
V3960320 - 100121472 - G97



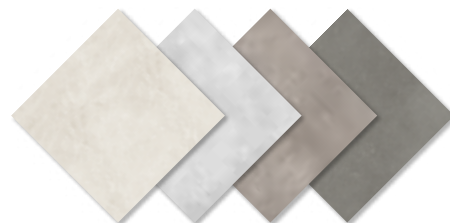
RHIN IVORY
33.3x100 cm (x9.2 mm) 13"x39 1/2"
V1389643 - 100135431 - G261
Butech recomienda junta *Recommends joint*
colorstuk rapid n marfil B22502009 - 100004302



RHIN TAUPE
33.3x100 cm (x9.2 mm) 13"x39 1/2"
V1389642 - 100135432 - G261
Butech recomienda junta *Recommends joint*
colorstuk rapid n cemento B22502004 - 100004297



RHIN NATURAL
33.3x100 cm (x9.2 mm) 13"x39 1/2"
V1440022 - 100143835 - G261
Butech recomienda junta *Recommends joint*
colorstuk rapid n manhattan B22502002 - 100004295



EMBALAJE PACKAGING Modelo Model	x CAJA BOX			x PALET			ADHESIVO*
	Piezas	M ² (1)	Kg (1)	Box	M ² (1)	Kg (1)	Butech
Rhin 33.3x100 cm	4	1.33	21.96	55	73.26	1208	One-flex Premium
Perfil 1.5x100 cm	15	0.45	5.59	28	12.60	156	/ Fr-one

PAVIMENTO COMBINABLE
FLOOR TILE COMBINATIONS
Rhin 59.6x59.6 cm

(1) Valores aproximados *Approximated values*
*Recomendación para soporte de mortero en interiores **Interior installation over cement mortar substrate*

RHIN SUEDE

Monoporosa Rectificado
Rectified Wall Tiles



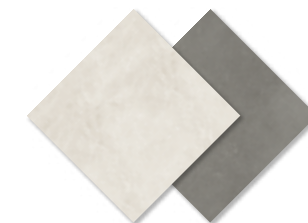
SUEDE IVORY
33.3x100 cm (x12 mm) 13"x39 1/2"
V1389637 - 100135476 - G271
Butech recomienda junta *Recommends joint*
colorstuk rapid n marfil B22502009 - 100004302



SUEDE TAUPE
33.3x100 cm (x12 mm) 13"x39 1/2"
V1389638 - 100135477 - G271
Butech recomienda junta *Recommends joint*
colorstuk rapid n cemento B22502004 - 100004297



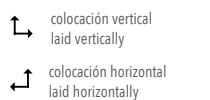
SUEDE WHITE MATT
33.3x100 cm (x12 mm) 13"x39 1/2"
V1389636 - 100135478 - G271
Butech recomienda junta *Recommends joint*
colorstuk rapid n blanco B22501001 - 100004294



PAVIMENTO COMBINABLE FLOOR TILE COMBINATIONS	EMBALAJE PACKAGING			x CAJA BOX			x PALET			ADHESIVO*
	Modelo Model	Piezas	M ² (1)	Kg (1)	Box	M ² (1)	Kg (1)	Box	M ² (1)	Kg (1)
Rhin 59.6x59.6 cm	Suede 33.3x100 cm	3	1.00	18.43	55	54.94	1013	One-flex Premium		
								/ Fr-one		

(1) Valores aproximados *Approximated values*
*Recomendación para soporte de mortero en interiores **Interior installation over cement mortar substrate*

SUEDE
En la colocación, atención a las flechas de la parte posterior
Please see the arrows on the back

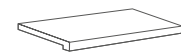


RHIN

Gres Porcelánico Rectificado / Color Masa
Rectified Porcelain Tiles / Coloured Biscuit



PIEZA ESPECIAL SPECIAL PIECE
9x59.6 cm (x10.5 mm) 3 1/2"x23 1/2"
ZÓCALO RHIN IVORY
V4460009 - 100146721 - G30
ZÓCALO RHIN NATURAL
V4460010 - 100149046 - G30
ZÓCALO RHIN GRIS
V4460018 - 100151976 - G30
ZÓCALO RHIN TAUPE
V4460011 - 100149047 - G30



PIEZA ESPECIAL SPECIAL PIECE
31.6x59.6 cm 12 1/2"x23 1/2"
H. TÉCNICA (2) RHIN IVORY
V7710012 - 100138267 - G130
H. TÉCNICA (2) RHIN NATURAL
V7710013 - 100139162 - G130
H. TÉCNICA (2) RHIN GRIS
V7710007 - 100137314 - G130
H. TÉCNICA (2) RHIN TAUPE
V7710011 - 100138268 - G130

(2) HUELLA TÉCNICA ESQUINA DE / IZ

Consultar Guía Técnica.
No disponible en stock.
Consultar condiciones
See *Technical Guide*.
Not in stock.
Check conditions

RHIN

Utilizar materiales de colocación
específicos para Gres Porcelánico
Use *specific Porcelain Tiles*
setting materials



RHIN IVORY
59.6x59.6 cm (x10.5 mm) 23 1/2"x23 1/2"
V5590659 - 100151468 - G354
Butech recomienda junta
Recommends joint
colorstuk rapid n marfil
B22502009 - 100004302



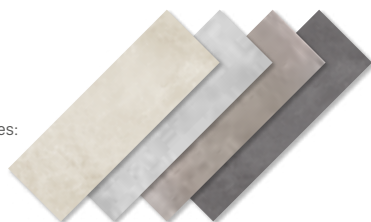
RHIN GRIS
59.6x59.6 cm (x10.5 mm) 23 1/2"x23 1/2"
V5590660 - 100151974 - G354
Butech recomienda junta
Recommends joint
colorstuk rapid n cemento
B22502004 - 100004297



RHIN NATURAL
59.6x59.6 cm (x10.5 mm) 23 1/2"x23 1/2"
V5590654 - 100149907 - G354
Butech recomienda junta
Recommends joint
colorstuk rapid n manhattan
B22502002 - 100004295



RHIN TAUPE
59.6x59.6 cm (x10.5 mm) 23 1/2"x23 1/2"
V5590650 - 100148920 - G354
Butech recomienda junta
Recommends joint
colorstuk rapid n cemento
B22502004 - 100004297



REVESTIMIENTO COMBINABLE

WALL TILE COMBINATIONS
Rhin 33.3x100 cm & decorative tiles:
Suede 33.3x100 cm

RHIN

Gres Porcelánico
Porcelain Tiles



RHIN IVORY
44.3x44.3 cm (x9.4 mm) 17 1/2"x17 1/2"
V5460033 - 100162366 - G311
Butech recomienda junta *Recommends joint*
colorstuk rapid n marfil B22502009 - 100004302



RHIN NATURAL
44.3x44.3 cm (x9.4 mm) 17 1/2"x17 1/2"
V5460032 - 100162349 - G311
Butech recomienda junta *Recommends joint*
colorstuk rapid n manhattan B22502002 - 100004295



RHIN TAUPE
44.3x44.3 cm (x9.4 mm) 17 1/2"x17 1/2"
V5460034 - 100162380 - G311
Butech recomienda junta *Recommends joint*
colorstuk rapid n cemento B22502004 - 100004297

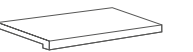


REVESTIMIENTO COMBINABLE

WALL TILE COMBINATIONS
Rhin 33.3x59.5cm & decorative tiles:
Suede 33.3x59.2 cm



PIEZA ESPECIAL SPECIAL PIECE
10x44.3 cm (x9.4 mm) 4"x17 1/2"
ZÓCALO RHIN IVORY
V4859954 - 100141933 - G7
ZÓCALO RHIN NATURAL
V4859955 - 100141934 - G7
ZÓCALO RHIN TAUPE
V4859956 - 100141935 - G7



PIEZA ESPECIAL SPECIAL PIECE
31.6x59.6 cm 12 1/2"x23 1/2"
H. TÉCNICA (2) RHIN IVORY
V7710012 - 100138267 - G130
H. TÉCNICA (2) RHIN NATURAL
V7710013 - 100139162 - G130
H. TÉCNICA (2) RHIN TAUPE
V7710011 - 100138268 - G130

(2) HUELLA TÉCNICA ESQUINA DE / IZ

Consultar Guía Técnica.
No disponible en stock.
Consultar condiciones
See *Technical Guide*.
Not in stock.
Check conditions

RHIN

Utilizar materiales de colocación
específicos para Gres Porcelánico
Use *specific Porcelain Tiles*
setting materials

EMBALAJE PACKAGING	x CAJA BOX			x PALET			ADHESIVO*	
	Modelo Model	Pieces	M ² (l)	Kg (l)	Box	M ² (l)	Kg (l)	Butech
Rhin 59.6x59.6 cm	4	1.42	33.92	32	45.46	1085		One-flex Premium / Fr-one
Huella Técnica 31.6x59.6 cm	2	0.41	12.00	48	19.96	576		
Zócalo 9x59.6 cm	18	0.96	25.68	56	54.07	1438		

(l) Valores aproximados *Approximated values*
*Recomendación para soporte de mortero en interiores **Interior installation over cement mortar substrate*

EMBALAJE PACKAGING	x CAJA BOX			x PALET			ADHESIVO*	
	Modelo Model	Pieces	M ² (l)	Kg (l)	Box	M ² (l)	Kg (l)	Butech
Rhin 44.3x44.3 cm	7	1.37	28.61	52	71.43	1488		One-flex Premium / Fr-one
Huella Técnica 31.6x59.6 cm	2	0.41	12.00	48	19.96	576		
Zócalo 10x44.3 cm	20	0.88	25.68	68	60.25	1278		

(l) Valores aproximados *Approximated values*
*Recomendación para soporte de mortero en interiores **Interior installation over cement mortar substrate*



SUELO FLOOR:
Rhin Gris 59.6x59.6 cm