

URBAN

Porcelánicos Porcelain Tiles



PAVIMENTOS FLOOR TILES

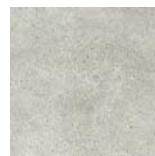


FORMATOS
SIZES

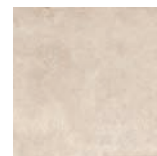
30x30 · 30x60 · 60x60 cm.



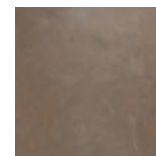
Blanco



Gris



Beige



Marrón



PORCELÁNICO
PORCELAIN



ESMALTADO
GLAZED



Características dimensionales
Dimension tolerance

<1% / <0,6% ·
máx 2 mm.



Absorción de agua
Water absorption

E≤0,5%



Coef. Dilatación termica lineal
Linear thermal expansion coefficient

5,8x10⁻⁶°C⁻¹



Resistencia a la flexión
Breaking Strength

>40N/mm²



Resistencia a la abrasión superficial
Resistance to surface abrasion

Antideslizante /
Anti slip:
Gris, Beige,
Blanco: PEI 4
Marrón: PEI 2
Liso / Smooth:
Gris, Beige,
Blanco: PEI 3
Marrón: PEI 2



Resistencia a las manchas
Resistance to stains

clase 5
class 5



Péndulo (CTE)
Not required out of Spain

Antideslizante:
clase 3
Anti slip: class 3
Liso: class 1
Smooth: class 1



A pie descalzo
Barefoot slip resistance

Antideslizante /
Anti slip: C
Liso / Smooth: A



A pie calzado
Slip resistance with footwear

Antideslizante /
Anti slip: R11
Liso / Smooth:
R9



Resistencia al cuarteo
Crazing resistance

si/yes



Resistencia a la helada
Frost resistance

✓



Resistencia al choque térmico
Resistance to thermal shock

✓

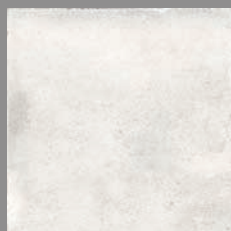


Resistencia química
Chemical resistance

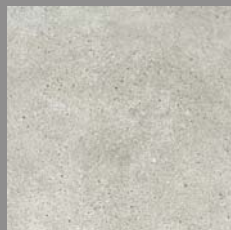
✓

URBAN

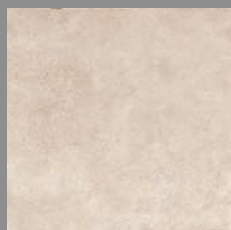
Colores / Colors



Blanco



Gris



Beige



Marrón

Base 30x60 Tile 30x60 Antideslizante / Anti slip

- Blanco** Antideslizante / Anti slip Cod. 904245 · [MC520]
- Gris** Antideslizante / Anti slip Cod. 904246 · [MC520]
- Beige** Antideslizante / Anti slip Cod. 904247 · [MC520]
- Marrón** Antideslizante / Anti slip Cod. 904248 · [MC520]

Base 30x60 Tile 30x60 Liso / Smooth

- Blanco** Liso / Smooth Cod. 904241 · [MC520]
- Gris** Liso / Smooth Cod. 904242 · [MC520]
- Beige** Liso / Smooth Cod. 904243 · [MC520]
- Marrón** Liso / Smooth Cod. 904244 · [MC520]

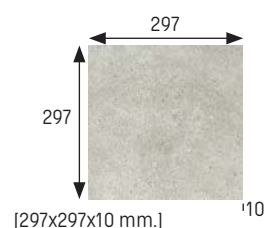


Base 30x30 Tile 30x30 Antideslizante / Anti slip

- Blanco** Antideslizante / Anti slip Cod. 904237 · [MC495]
- Gris** Antideslizante / Anti slip Cod. 904238 · [MC495]
- Beige** Antideslizante / Anti slip Cod. 904239 · [MC495]
- Marrón** Antideslizante / Anti slip Cod. 904240 · [MC495]

Base 30x30 Tile 30x30 Liso / Smooth

- Blanco** Liso / Smooth Cod. 904233 · [MC495]
- Gris** Liso / Smooth Cod. 904234 · [MC495]
- Beige** Liso / Smooth Cod. 904235 · [MC495]
- Marrón** Liso / Smooth Cod. 904236 · [MC495]

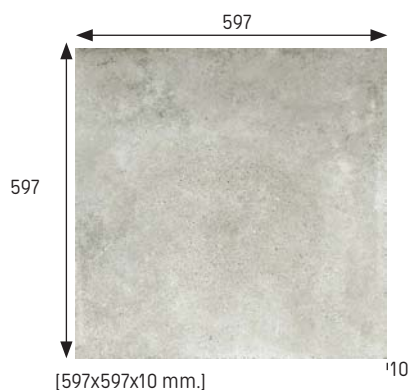


Base 60x60 Tile 60x60 Antideslizante / Anti slip

- Blanco** Antideslizante / Anti slip Cod. 904253 · [MC520]
- Gris** Antideslizante / Anti slip Cod. 904254 · [MC520]
- Beige** Antideslizante / Anti slip Cod. 904255 · [MC520]
- Marrón** Antideslizante / Anti slip Cod. 904256 · [MC520]

Base 60x60 Tile 60x60 Liso / Smooth

- Blanco** Liso / Smooth Cod. 904249 · [MC520]
- Gris** Liso / Smooth Cod. 904250 · [MC520]
- Beige** Liso / Smooth Cod. 904251 · [MC520]
- Marrón** Liso / Smooth Cod. 904252 · [MC520]



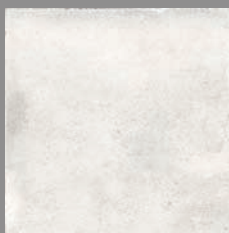
	Espesor (mm) Thickness (mm)	U.M.*	U.M./caja U.M./box	U.M./Palet U.M./Pallet	Pzs./U.M. Pcs./U.M.	Pzs./caja Pcs/box	Kg./U.M. Kg./U.M.	Kg./caja Kg./box	Kg./Palet Kg./Pallet
Base 30x30 Tile 30x30	10	m ² sqm	0,99	71,29	11,11	11	21,54	21,33	1536
Base 30x60 Tile 30x60	10	m ² sqm	1,08	64,86	5,55	6	21,65	23,38	1403
Base 60x60 Tile 60x60	10	m ² sqm	1,44	60,48	2,78	4	22,53	32,44	1362,5

*Unidad de Medida. Los artículos medidos en M² o ML se sirven contando la junta normal entre piezas
*Unit of measure. Items measured in SQM or LM are delivered assuming average joint between pieces

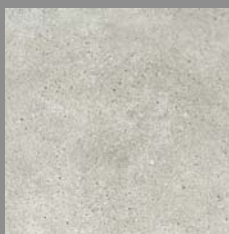


URBAN **Piezas especiales** Special pieces

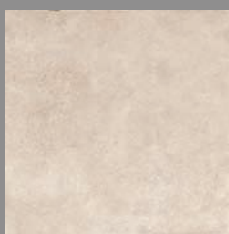
Colores / Colors



Blanco



Gris



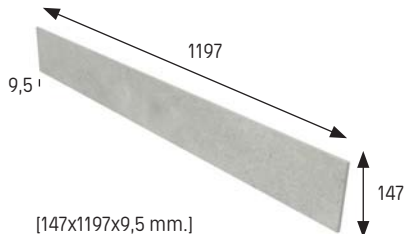
Beige



Marrón

Tabica 15x120 · Liso Riser 15x120 · Smooth

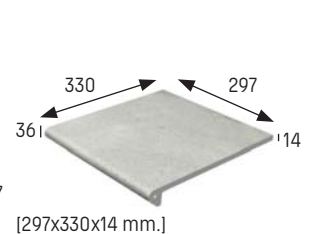
Blanco	Cod. 904257 · [PZ220]
Gris	Cod. 904258 · [PZ220]
Beige	Cod. 904259 · [PZ220]
Marrón	Cod. 904260 · [PZ220]



[147x1197x9,5 mm.]

Peldaño redondeado 30 · Antideslizante Rounded stair-tread 30 · Anti slip

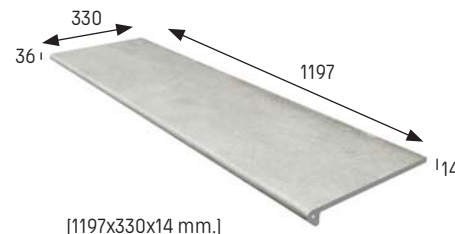
Blanco	Cod. 904277 · [PZ325]
Gris	Cod. 904278 · [PZ325]
Beige	Cod. 904279 · [PZ325]
Marrón	Cod. 904280 · [PZ325]



[297x330x14 mm.]

Peldaño redondeado 120 · Liso Rounded stair-tread 120 · Smooth

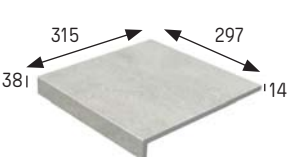
Blanco	Cod. 904281 · [PZ733]
Gris	Cod. 904282 · [PZ733]
Beige	Cod. 904283 · [PZ733]
Marrón	Cod. 904284 · [PZ733]



[1197x330x14 mm.]

Peldaño recto 30 · Antideslizante Straight stair-tread 30 · Anti slip

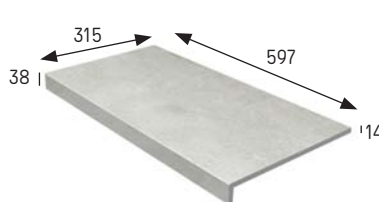
Blanco	Cod. 904261 · [PZ300]
Gris	Cod. 904262 · [PZ300]
Beige	Cod. 904263 · [PZ300]
Marrón	Cod. 904264 · [PZ300]



[297x315x14 mm.]

Peldaño recto 60 · Antideslizante Straight stair-tread 60 · Anti slip

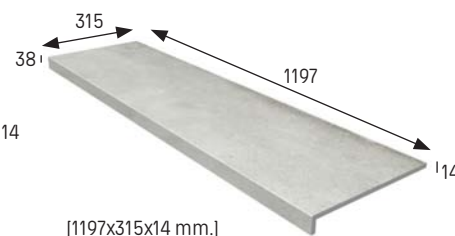
Blanco	Cod. 904265 · [PZ650]
Gris	Cod. 904266 · [PZ650]
Beige	Cod. 904267 · [PZ650]
Marrón	Cod. 904268 · [PZ650]



[597x315x14 mm.]

Peldaño recto 120 · Liso Straight stair-tread 120 · Smooth

Blanco	Cod. 904269 · [PZ733]
Gris	Cod. 904270 · [PZ733]
Beige	Cod. 904271 · [PZ733]
Marrón	Cod. 904272 · [PZ733]



[1197x315x14 mm.]

Rodapié Skirting board · Liso / Smooth

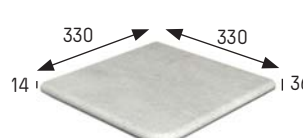
Blanco	Cod. 904305 · [ML230]
Gris	Cod. 904306 · [ML230]
Beige	Cod. 904307 · [ML230]
Marrón	Cod. 904308 · [ML230]



[297x80x9,5 mm.]

Esquina redondeada · Antideslizante Rounded stair-tread corner · Anti slip

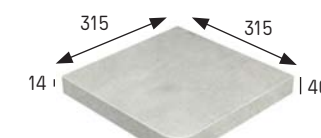
Blanco	Cod. 904285 · [PZ715]
Gris	Cod. 904286 · [PZ715]
Beige	Cod. 904287 · [PZ715]
Marrón	Cod. 904288 · [PZ715]



[330x330x14 mm.]

Esquina recta · Antideslizante Straight stair-tread corner · Anti slip

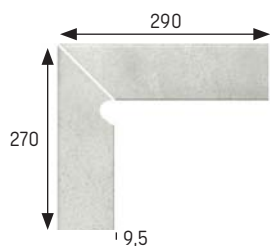
Blanco	Cod. 904273 · [PZ715]
Gris	Cod. 904274 · [PZ715]
Beige	Cod. 904275 · [PZ715]
Marrón	Cod. 904276 · [PZ715]



[315x315x40 x14 mm.]

Zanquín redondeado izda. · Liso Rounded string left side · Smooth

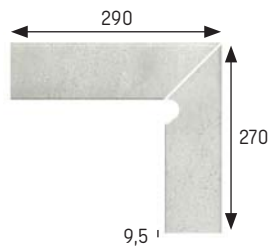
Blanco	Cod. 904289 · [JG245]
Gris	Cod. 904290 · [JG245]
Beige	Cod. 904291 · [JG245]
Marrón	Cod. 904292 · [JG245]



[290x80/270 x9,5 mm.]

Zanquín redondeado dcha. · Liso Rounded string right side · Smooth

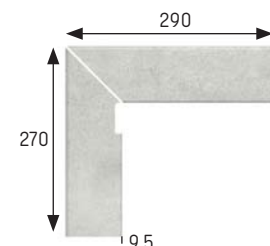
Blanco	Cod. 904293 · [JG245]
Gris	Cod. 904294 · [JG245]
Beige	Cod. 904295 · [JG245]
Marrón	Cod. 904296 · [JG245]



[290x80/270 x9,5 mm.]

Zanquín recto izda. · Liso Straight string left side · Smooth

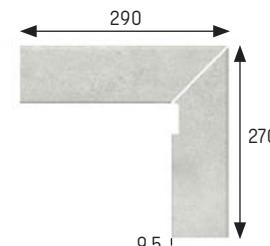
Blanco	Cod. 904297 · [JG245]
Gris	Cod. 904298 · [JG245]
Beige	Cod. 904299 · [JG245]
Marrón	Cod. 904300 · [JG245]



[290x80/270 x9,5 mm.]

Zanquín recto dcha. · Liso Straight string right side · Smooth

Blanco	Cod. 904301 · [JG245]
Gris	Cod. 904302 · [JG245]
Beige	Cod. 904303 · [JG245]
Marrón	Cod. 904304 · [JG245]



[290x80/270 x9,5 mm.]



Urban Blanco 30x30, 30x60 y 60x60

	Espesor (mm) Thickness (mm)	U.M.*	U.M./caja U.M./box	U.M./Palet U.M./Pallet	Pzs./U.M. Pcs./U.M.	Pzs./caja Pcs/box	Kg./U.M. Kg./U.M.	Kg./caja Kg./box	Kg./Palet Kg./Pallet
Tabica 15x120 Riser 15x120	9,5	Pz. Pc.	12	180	1	12	**	**	**
Peldaño redondeado 30 Rounded stair-tread 30	14	Pz. Pc.	6	252	1	6	3,1	18,6	781
Peldaño redondeado 120 Rounded stair-tread 120	14	Pz. Pc.	2	34	1	2	12,17	24,34	413,8
Peldaño recto 30 Straight stair-tread 30	14	Pz. Pc.	6	252	1	6	3,1	16,26	682,92
Peldaño recto 60 Straight stair-tread 60	14	Pz. Pc.	4	72	1	4	5,5	21,8	392
Peldaño recto 120 Straight stair-tread 120	14	Pz. Pc.	2	34	1	2	10,84	21,68	368,5
Rodapié Skirting board	9,5	ml lm	10,21	367,57	3,33	34	1,74	17,6	650
Esquina redondeada Rounded stair-tread corner	14	Pz. Pc.	2	60	1	2	4,25	8,5	255
Esquina recta Straight stair-tread corner	14	Pz. Pc.	2	60	1	2	3,5	7	420
Zanquín redondeado izda. Rounded string left	9,5	Jg. set	17	612	2	34	0,85	14,45	520,2
Zanquín redondeado dcha. Rounded string right	9,5	Jg. set	17	612	2	34	0,85	14,45	520,2
Zanquín recto izda. Straight string left	9,5	Jg. set	17	612	2	34	0,85	14,45	520,2
Zanquín recto dcha. Straight string right	9,5	Jg. set	17	612	2	34	0,85	14,45	520,2

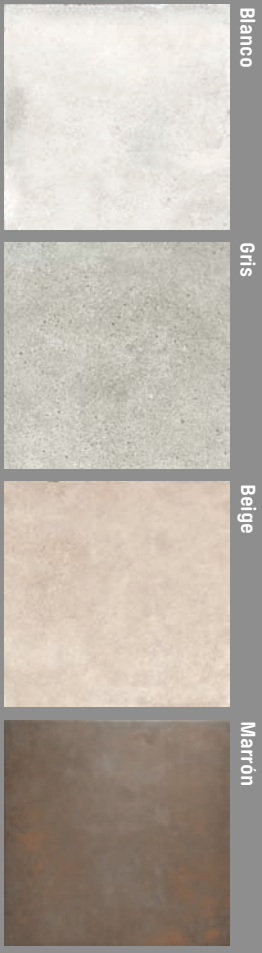
*Unidad de Medida. Los artículos medidos en M² o ML se sirven contando la junta normal entre piezas
*Unit of measure. Items measured in SQM or LM are delivered assuming average joint between pieces

** Consultar datos de embalaje a fábrica / Ask factory for packing information

URBAN

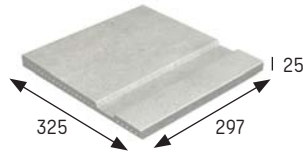
Piezas especiales Special pieces

Colores / Colors



Borde desbordante 30 · Antideslizante
Overflowing edge 30 · Anti slip

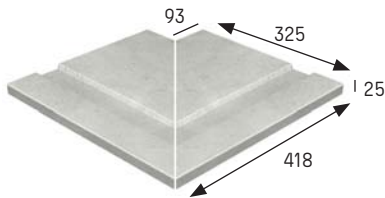
Blanco	Cod. 904309 · [PZ340]
Gris	Cod. 904310 · [PZ340]
Beige	Cod. 904311 · [PZ340]
Marrón	Cod. 904312 · [PZ340]



[297x325x25 mm.]

Esq. ext. borde desbordante
Overflowing external edge
Antideslizante / Anti slip

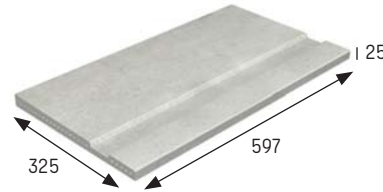
Blanco	Cod. 904321 · [JG760]
Gris	Cod. 904322 · [JG760]
Beige	Cod. 904323 · [JG760]
Marrón	Cod. 904324 · [JG760]



[325x418x93 mm.]

Borde desbordante 60 · Antideslizante
Overflowing edge 60 · Anti slip

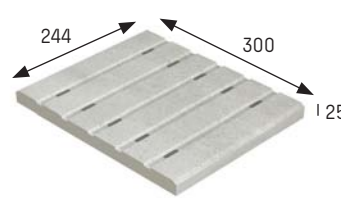
Blanco	Cod. 904313 · [PZ650]
Gris	Cod. 904314 · [PZ650]
Beige	Cod. 904315 · [PZ650]
Marrón	Cod. 904316 · [PZ650]



[597x325x25 mm.]

Rejilla cerámica monocompact**
Monocompact ceramic grid
Antideslizante / Anti slip

Blanco	Cod. 904325 · [PZ595]
Gris	Cod. 904326 · [PZ595]
Beige	Cod. 904327 · [PZ595]
Marrón	Cod. 904328 · [PZ595]



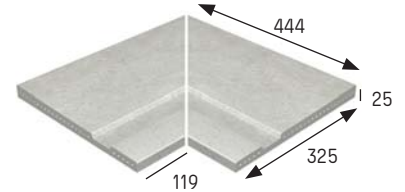
[300x244x25 mm.]

** En rejillas los agujeros siempre deben ir perpendiculares al vaso para una mayor resistencia, con canal de 250 mm. de ancho
** Install the grids with the holes always perpendicular to the pool vessel for greater resistance, with a 250 mm channel wide.

Ver/see pg. 18

Esq. int. borde desbordante · Antideslizante
Overflowing internal edge · Anti slip

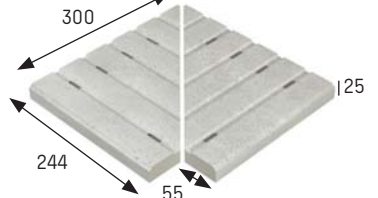
Blanco	Cod. 904317 · [JG760]
Gris	Cod. 904318 · [JG760]
Beige	Cod. 904319 · [JG760]
Marrón	Cod. 904320 · [JG760]



[325x444x119 mm.]

Esquina rejilla · Antideslizante
Corner grid · Anti slip

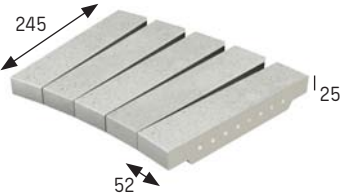
Blanco	Cod. 904329 · [JG740]
Gris	Cod. 904330 · [JG740]
Beige	Cod. 904331 · [JG740]
Marrón	Cod. 904332 · [JG740]



[300x244x25 x55 mm.]

Rejilla flexible · Antideslizante
Flexible grid · Anti slip

Blanco	Cod. 904333 · ◆
Gris	Cod. 904334 · ◆
Beige	Cod. 904335 · ◆
Marrón	Cod. 904336 · ◆

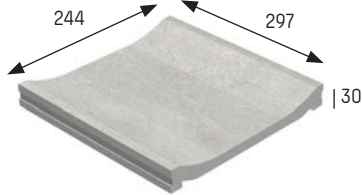


[245x25 x52 mm.]

◆ Consultar PVP con fábrica / Ask for price to the factory
Disponibile bajo pedido / Available on demand

Canaleta* · Antideslizante
Overflow channel · Anti slip

Blanco	Cod. 904337 · [PZ340]
Gris	Cod. 904338 · [PZ340]
Beige	Cod. 904339 · [PZ340]
Marrón	Cod. 904340 · [PZ340]



[297x244x30 mm.]

* Disponible Canaleta con desagüe
* Available Overflow channel with drainage

Cantonera · Antideslizante
External radial tile · Anti slip

Blanco	Cod. 904345 · [PZ105]
Gris	Cod. 904346 · [PZ105]
Beige	Cod. 904347 · [PZ105]
Marrón	Cod. 904348 · [PZ105]



[297x42 mm.]

Rinconera · Antideslizante
Internal radial tile · Anti slip

Blanco	Cod. 904341 · [PZ105]
Gris	Cod. 904342 · [PZ105]
Beige	Cod. 904343 · [PZ105]
Marrón	Cod. 904344 · [PZ105]



[297x42 mm.]

Escocia exterior · Antideslizante
Round external mitre · Anti slip

Blanco	Cod. 904353 · [PZ280]
Gris	Cod. 904354 · [PZ280]
Beige	Cod. 904355 · [PZ280]
Marrón	Cod. 904356 · [PZ280]



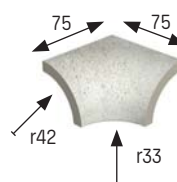
Escocia interior · Antideslizante
Round internal mitre · Anti slip

Blanco	Cod. 904349 · [PZ280]
Gris	Cod. 904350 · [PZ280]
Beige	Cod. 904351 · [PZ280]
Marrón	Cod. 904352 · [PZ280]



Esq. Cantonera · Antideslizante
External mitre · Anti slip

Blanco	Cod. 904361 · [PZ355]
Gris	Cod. 904362 · [PZ355]
Beige	Cod. 904363 · [PZ355]
Marrón	Cod. 904364 · [PZ355]



[75x75 mm.]

Esq. Rinconera · Antideslizante
Internal mitre · Anti slip

Blanco	Cod. 904357 · [PZ355]
Gris	Cod. 904358 · [PZ355]
Beige	Cod. 904359 · [PZ355]
Marrón	Cod. 904360 · [PZ355]



[75x75 mm.]

Anchura recomendada de la junta de colocación: Consultar pag. 18
Wide installation joint recommended: See pag. 18



Marrón 60x60

	Espesor (mm) Thickness (mm)	U.M.*	U.M./caja U.M./box	U.M./Palet U.M./Pallet	Pzs./U.M. Pcs./U.M.	Pzs./caja Pcs/box	Kg./U.M. Kg./U.M.	Kg./caja Kg./box	Kg./Palet Kg./Pallet
Borde desbordante 30 Overflowing edge 30	25	Pz. Pc.	4	264	1	4	4,599	18,396	1240
Borde desbordante 60 Overflowing edge 60	25	Pz. Pc.	2	60	1	2	9,028	18.056	563
Esq. int. borde desbordante Overflowing internal edge	25	Jg. Set	2	-	2	4	7	14	-
Esq. ext. borde desbordante Overflowing external edge	25	Jg. Set	2	-	2	4	7	14	-
Rejilla cerámica monocompact Monocompact ceramic grid	25	Pz. Pc.	6	378	1	6	3,41	20,5	-
Esquina rejilla Corner grid	25	Set Set	3	-	2	6	4	12	-
Rejilla flexible Flexible grid	**	**	**	**	**	**	**	**	**
Canaleta Overflow channel	30	Pz. Pc.	4	288	1	4	2,5	10,2	734
Cantonera External radial tile	-	Pz. Pc.	42	1512	1	42	0,34	14,5	522
Rinconera Internal radial tile	-	Pz. Pc.	35	1260	1	35	0,41	14,2	511
Escocia interior Round internal mitre	-	Pz. Pc.	24	-	1	24	0,1	1,9	-
Escocia exterior Round external mitre	-	Pz. Pc.	24	-	1	24	0,1	1,9	-
Esq. cantonera External mitre	-	Pz. Pc.	4	-	1	4	0,33	1,3	-
Esq. rinconera Internal mitre	-	Pz. Pc.	4	-	1	4	0,33	1,3	-

*Unidad de Medida. Los artículos medidos en M² o ML se sirven contando la junta normal entre piezas
*Unit of measure. Items measured in SQM or LM are delivered assuming average joint between pieces

** Consultar datos de embalaje a fábrica / Ask factory for packing information